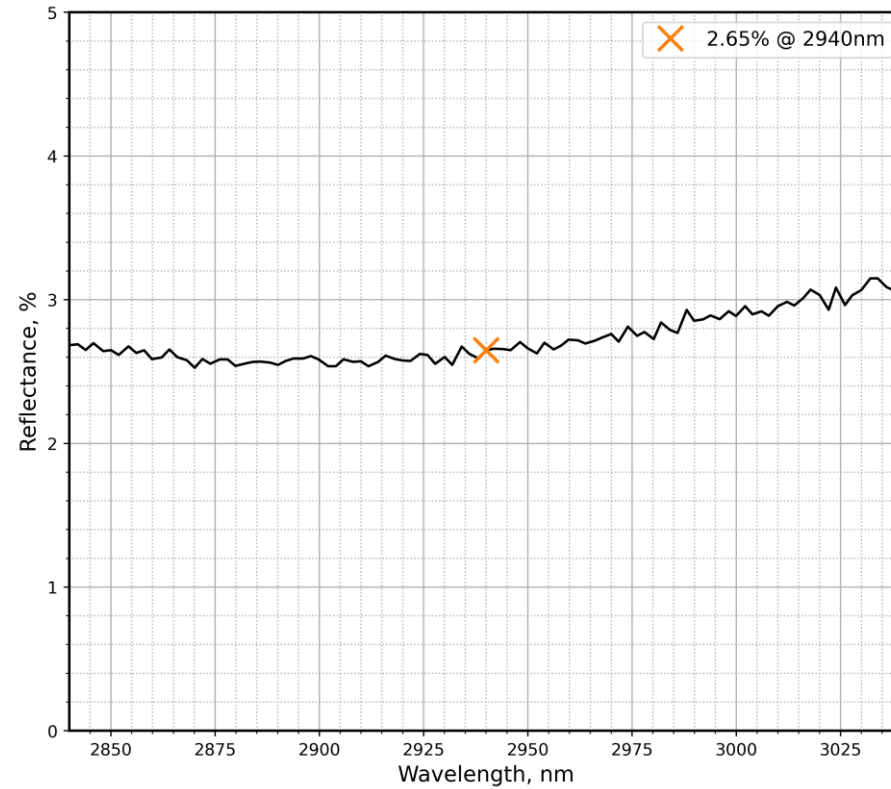


S1: (arrow marks) PRa = 2% +/- 0.3% @ 2940 nm, AOI 45 deg. |Rs-Rp| < 2.5%
S2: ARa < 0.7% @ 2940 nm, AOI 45 deg.



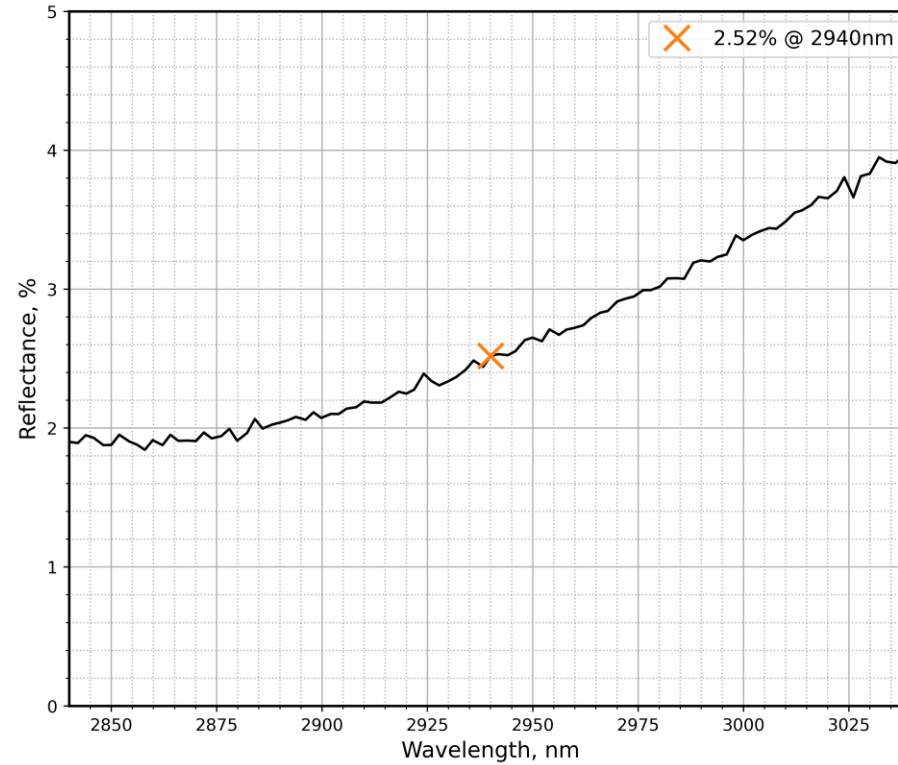
PO4808 Ra i45

Fig. 1.

SIDE MEASURED: S1+S2 (good component)

COMMENTS: Margin of measurement error: +/-0.25%

S1: (arrow marks) PRa = 2% +/- 0.3% @ 2940 nm, AOI 45 deg. |Rs-Rp| < 2.5%
S2: ARa < 0.7% @ 2940 nm, AOI 45 deg.



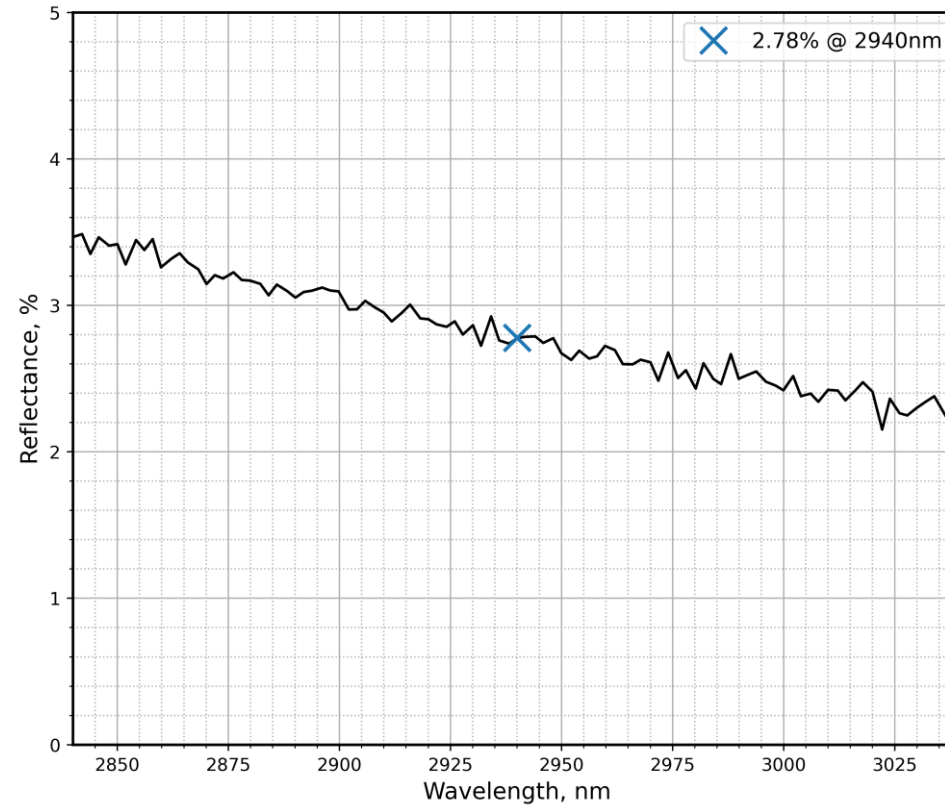
PO4808 Rs i45

Fig. 2.

SIDE MEASURED: S1+S2 (good component)

COMMENTS: Margin of measurement error: +/-0.25%

S1: (arrow marks) $PRa = 2\% \pm 0.3\%$ @ 2940 nm, AOI 45 deg. $|Rs-Rp| < 2.5\%$
S2: $ARa < 0.7\%$ @ 2940 nm, AOI 45 deg.



PO4808 Rp i45

Fig. 3.

SIDE MEASURED: S1+S2 (good component)

COMMENTS: Margin of measurement error: $\pm 0.25\%$